

The Issue:

Prevention of Child Abuse & Neglect

**2010
Priority**

**CHILDREN'S BUREAU, INC
POSITION:**

We support initiatives to strengthen and benefit families and children by expanding and enhancing education, resources, and assistance. Children's Bureau believes that the well-being of children is directly connected to the stability and strength of families, and that by supporting families, the risk of abuse and neglect will be reduced.

CBI Program Impact:

- Children's Bureau Inc provided preventative services to the following numbers of children and families in 2008:
 - Parents As Teachers (16 families), Access Coordination Team (170 children), CCDF vouchers (16,313 children), Project Safe Place (76 children), Community Partners for Child Safety (1,568 families), Pro 100 (99 children), NACS (817 families), Family Support Children's Shelter (745 children)

We recommend the following policy initiatives:

- Ensure that preventive services are family-centered, culturally-competent, strength-based and developmentally appropriate.
- Increase availability of supportive resources for parents/caregivers-for example: support groups, resource centers, parenting skills and communication training, emergency hotlines, respite services, and substance abuse treatment programs.
- Promote legislation, policies, and funding that support the well-being of Indiana children by supporting and strengthening families.
- Support Statewide public outreach campaigns designed to increase awareness of the risks for child abuse/neglect and of methods for preventing the maltreatment of children.
- Adequately finance and advertise successful prevention programs and services to increase family participation in such programs.
- Expand and strengthen both parenting and life skills curriculum in public schools, targeting middle and high school students.
- Make prenatal health services more readily available for low-income and poor mothers.
- Encourage the development of more community resources and housing subsidies to assist families and young adults in obtaining safe and adequate housing.
- Increase Federal and State funding for CCDF voucher program to alleviate child care costs for working, low-income parents.
- Expand education and vocational training programs to allow the working poor an opportunity to develop skills that will allow them to earn higher incomes, receive health benefits, and advance to higher level positions.
- Support adequate resources to insure every child has access to K-16 educational experiences to help achieve success by 25.

Middle Class Family Impacted by Current Economic Crisis

The Johnson family is a family of five and the father was recently laid off. The family was living pay check to pay check and now is unable to meet their basic needs. The family has been unable to meet basic needs and is past due on their electricity and gas bills. The family had been trying to work with the company, but can not pay the arrangement that was negotiated. Due to the father's previous income, they are not eligible for assistance that is available and if the gas and electricity is turned off the children will be unable to remain in the home. This lack of utilities could result in removal because the parents have been unable to provide for the children's basic needs. The parents have been searching for employment for several months and attempted to access all resources in the community.

Prevention is a Community Priority

Statistics for child abuse and neglect continue to be alarmingly high both nationally and in Indiana. Too frequently, stories of children being horribly mistreated are reported by the media - often with tragic endings. Unfortunately, by the time authorities are able to identify a need for services or intervene on behalf of children, serious problems already exist within some families. To effectively combat abuse and neglect, communities must offer not only efficient interventions but also programs and services designed to prevent

problems from developing within families.

Prevention requires a commitment from all members of society, so that families are able to access resources to help them be strong, healthy, and successful. Indiana's Department of Child Services (DCS) has undergone remarkable improvements recently, with promising practices continuously being developed and implemented. Prevention has become a priority of DCS, as supportive services are increasingly more available throughout the State. The

expansion of prevention services is encouraging and reflects an overall commitment to addressing child abuse and neglect on the front end. Unfortunately, the number of victimized children continues to rise and the limited number of existing prevention services doesn't allow access for all families. Both issues emphasize the necessity for even greater prevention efforts by all communities, leaders, and organizations.

Number of Child Abuse and Neglect Victims and Costs

Nationally, it was estimated that 905,000 children were victims of abuse or neglect in 2006¹. In Indiana, 109,499 reports of abuse and neglect were made during SFY 2008. In 2008, the rate of substantiated reports of child maltreatment was 11 per 1,000 children ages 0-17². During SFY 2007, Indiana saw a drop in the number of child fatalities from 54 in 2005 to 36 in 2007. The highest

percent of these were the result of neglect - specifically positional asphyxiation and drowning³. Costs of treatment and services are also escalating. The most recent estimate of the costs of child abuse and neglect completed in 2007 is \$103.8 billion nationally. Direct costs are child welfare services, hospi-

talization, mental health treatment, and the prosecution of adult offenders, among others⁴. Indirect costs are substance abuse treatment, ongoing medical care, domestic violence intervention, victims' adult criminality, and their lost productivity to society⁴.

"To catch the reader's attention, place an interesting sentence or quote from the story here."

Parents Need Adequate Resources and Support

The best way to prevent abuse and neglect from occurring is to ensure that parents are provided adequate resources and support, and understand ways to keep their children safe. Ultimately, children are most safe when their families are healthy and strong. Families

most often are at risk when they are threatened by domestic violence, marital issues, lack of parenting skills, drug and/or alcohol dependency, insufficient



Caption describing picture or graphic.

child care funds, poor housing, and poverty⁵.

Impact of Poverty on Families and Children

The causes of poverty are complex, influenced by both a fluctuating economy and by individual and family issues⁶. A poor economy, high unemployment rates, insufficient public education, or a lack of ade-

"To catch the reader's attention, place an interesting sentence or quote from the story here."

quate work opportunities - all of these things can contribute to an individual experiencing poverty⁷. In the same respect, substance abuse, poor physical or mental health, or family violence can play a role for some, as well. Research indi-

cates, however, that the most important factor in reducing poverty is the number or available jobs paying livable wages⁸.

Importance of Housing Assistance

Housing assistance can make a difference between stable housing and homelessness for thousands of families. It has been shown that families who have been homeless and receive a housing subsidy are 21 times more likely to remain in a stable home environment in comparison to families that do not receive a housing subsidy⁹. Families are eligible to receive the federal Section 8 rent subsidy if their income is below 80 percent of the

area's median income¹⁰. In Indiana, 17,362 children resided in a project-based Section 8 unit in August of 2007¹⁰. While thousands of families are receiving assistance through this needed program, statistics show that the number of available vouchers is not adequate in meeting the needs of all families that are eligible. Nationally, one in five income-eligible households obtains a Section-8 voucher¹¹.

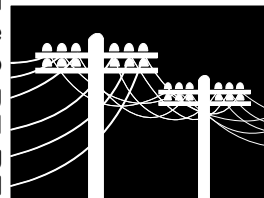


Caption describing picture or graphic.

Impact of Education on Self-Sufficiency

Parenting education, life skills training, and academic resources should be made readily available for families, individuals, and for youth to insure that every child has access to K-16 educational experiences to help achieve success by 25. In Indiana, attendance is necessary and mandatory according to IC 20-8.1-3. Therefore, we must stand firmly to support educational services that accommodate children with exceptional challenges and advance the

learning process. Inconsistent school attendance can lead to decreased school performance and eventually lead to a student dropping out of the educational environment. During the 2007-2008 school year, 22.2 percent of students did not graduate high school¹². Individuals who drop out of school have several consequences in adulthood, such as less in-



Caption describing picture or graphic.

come, unemployment, engaging in high-risk behaviors, and incarceration¹³. It is estimated that over the span of 25 to 30 years, an individual who dropped out of high school will cost \$500,000 due to public assistance, health care, and incarceration costs¹³.

Importance of Child Care Assistance

Due to the inability of many families being able to afford child care to enter the workforce, federal and state funds have been provided through the Child Care Development Fund (CCDF). A family can get on the program if they make 127 percent or below of the poverty level (\$23,256 for a family of three) and can remain on the program until they make over 170 percent of the poverty level if they are working or enrolled in school¹⁴. 55,935 children were served in 2008 with the average monthly waitlist including 5,831 children¹.

Despite thousands of Hoosier children receiving assistance, income eligibility requirements and lack of sufficient income continue to leave thousands of Hoosier families without assistance and struggling to remain employed and fund child care expenses. Investing in child care assistance funding would assist Indiana in expanding economic and workforce development initiatives across the state. It is estimated that due to the availability of child care Hoosier parents are able to earn nearly \$4 billion in wages¹⁵. It has been esti-

mated that for every \$1 spent on improving the quality and availability of early childhood programs \$7 are saved from future spending of mental health, substance abuse, special education, and imprisonment¹⁵.

"To catch the reader's attention, place an interesting sentence or quote from the story here."

Types of Prevention Programs

Within a comprehensive plan to prevent child maltreatment, three types of prevention programs or services are involved¹⁶. Primary Prevention activities are designed to educate the community as a whole about child abuse, before families become involved in the child welfare system¹⁶. Secondary Prevention is more direct in audience; families at a higher risk for abuse

or neglect are the focus of these programs¹⁶. Teen parents, families with substance abuse issues, parents of special needs children, and low-income families are targeted for services¹⁶. The third type is Tertiary Prevention, which involves activities and services for families who have had substantiated incidents of abuse or neglect or who

are involved in protective services¹⁶.

Components of Quality Prevention Programs

Home-based counseling, referrals to community services, and support groups could also prove beneficial to families both before and after they have become involved in the child welfare system. In order to understand what prevention services and supports would benefit families at risk

for abuse, significant dialogue needs to take place between child advocates and the families in question. Prevention services must be strength-based, culturally-competent, family-focused and



Caption describing picture or graphic.

accessible for all community members.

Outcomes of Quality Prevention Programs

Undoubtedly, prevention programs will reduce the likelihood of child maltreatment. Recipients of prevention services have demonstrated a reduced rate of child abuse when compared to caregivers not re-

“To catch the reader’s attention, place an interesting sentence or quote from the story here.”

ceiving any form of prevention services³. Parents also report a reduction in personal and family stress, improved social functioning, and improved overall health upon participation in prevention services. Research has demonstrated a

connection between abuse and/or neglect in childhood with many adult issues, such as substance abuse, crime, and continued abusive behaviors³. If abuse can be prevented during childhood, the risk of these issues occurring later could then also be reduced, benefiting the community as a whole.

Cost Savings of Prevention Programs

The costs of providing prevention services are quite minimal in comparison to traditional interventions. One Michigan study found that the estimated cost of addressing abuse and neglect was roughly \$825 million annually; this included costs connected with low birth weights, foster care, criminal prosecution, and medical treatment¹⁷. In contrast, they found that the annual cost of providing prevention services to every first time parent in the state would be around \$43 million¹⁷. In Colorado, a similar report was released; estimating cur-

rent child abuse/neglect costs at roughly \$400 million per year while providing home-based services for families at risk would cost under \$25 million⁹. In addition to significant financial savings, prevention would have other benefits for taxpayers, including reduced medical and mental health care usage, lower incidences of violence, and improved educational and vocational



Caption describing picture

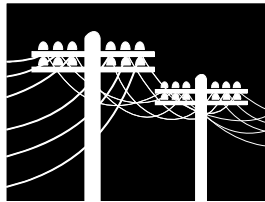
outcomes of both parents and children¹⁷.

Indiana currently invests in prevention services through programs such as Community Partners for Child Safety, Healthy Families, Youth Service Bureaus, and Project Safe Place. In addition to these State supported programs, several private non-profit agencies also offer prevention to families in need. Non-profit agencies are limited however, as funding determines the capacity, accessibility and continuity of such programs.

Prevention is a Community Effort

As a society, we must do all that we can to ensure every child grows up in a safe and healthy environment. This requires not only action from elected officials, but also an overall commitment from every member of the community. Social service agencies, educators, faith-based groups, health care workers,

neighborhoods, and businesses each have a role to play in the prevention of child abuse and neglect. Parenting is one of the most important responsibilities any individual can undertake. In order to best serve children, we must sup-



Caption describing picture or graphic.

port and assist families in becoming healthy, strong, and flourishing. By supporting an expansion of prevention services, we will be on our way.



For More Information Contact:
1575 Dr Martin Luther King Jr. St
Indianapolis, IN 46202

Phone: 317-264-2700
Fax: 317-264-2714

<http://www.childrens-bureau.org/corp/adv/index.php>

THE ISSUE:

Prevention of Child Abuse &
Neglect

2010 Priority

- **Mission:** We help Indiana children in need.
- **Vision:** To develop a healthy family for every child.

• Children's Bureau, Inc is a private non-profit 501(c)3 child and family services agency, licensed by the State of Indiana. Children's Bureau, Inc provides services to families and children who are at risk of abuse and/or neglect, have been a victim of abuse and/or neglect, or have been involved in delinquent behavior. Services are provided in the areas of abuse and/or neglect prevention, family preservation, and placement, which includes foster care, independent living, group homes, and adoption. Children's Bureau makes agency services available and affordable to all families and children, without regard to race, religion, nationality, economic status, sex, or handicap.

Accreditations

• Council on Accreditation of Services for Families & Children (COA)

• Licensed by the Indiana Department of Child Services

Affiliations

• United Way of Central Indiana (Charter Member), United Way of Johnson County, United Way of Madison County, Indiana Youth Services Association, Child Welfare League of America (Founding Member), IARCCA: An Association of Children & Family Services

References and Helpful Links

- 1 Indiana Youth Institute. (2008). *Kids count in Indiana: 2008 data book: A profile in child well-being*. Retrieved from, <http://iyi.org/resources/pdf/IYI-Kids-Count-in-Indiana-Book-2008.pdf>
- 2 Indiana Department of Child Services. (2009). *Department of child services demographics and trending report state fiscal year 2008*. Retrieved from, http://www.in.gov/dcs/images/D_T_SFY_2008_Data_Report.pdf
- 3 Indiana Department of Child Services. (2008). *Child fatality report for FY 2007*. Retrieved from, [http://www.in.gov/dcs/files/2008-03-28_SFY_2007_Child_Fatality_Report\(Final_Draft\)_v01.pdf](http://www.in.gov/dcs/files/2008-03-28_SFY_2007_Child_Fatality_Report(Final_Draft)_v01.pdf)
- 4 Prevent Child Abuse America. (2007). *Total estimated cost of child abuse and neglect in the United States*. Retrieved from, http://www.preventchildabuse.org/about_us/media_releases/pcaa_pew_economic_impact_study_final.pdf
- 5 Indianapolis Partnership for Child Well-Being. (2005). *A strategic plan for the welfare of marion county's children and families*.
- 6 Center for Law and Social Policy. (2006). *Targeting poverty: Aim at a bull's eye*. Retrieved from, <http://www.clasp.org/admin/site/publications/files/0316.pdf>
- 7 Indianapolis Star. (9/17/2006). *The poor among us: Poverty in Indiana*.
- 8 Coalition on Human Needs. (2006). *Four years of unshared recovery*. Retrieved from, <http://www.chn.org/pdf/2006/2005CensusPressRelease.pdf>
- 9 National Alliance to End Homelessness. (February 2007). *Family homelessness*. Retrieved from, <http://www.endhomelessness.org/content/article/detail/1525>.
- 10 Indiana Youth Institute. (2007). *Kids count in Indiana: 2007 data book: A profile of child well-being*.
- 11 HOME Line. (2006). *The HOME line section 8 report*. Retrieved from, <http://www.homelinemn.org/downloads/section8/2006Section8report.pdf>
- 12 Indianapolis Department of Education. (2009). *Indiana State school graduation rates (Class of 2006 and Beyond)*. Retrieved from, <http://mustang.doe.state.in.us/TRENDS/trends1.cfm?var=grad4>
- 13 Indiana Department of Education. (No Date). *Consequences of dropping out of school*. Retrieved from, http://www.doe.in.gov/sservices/pdf/sao_drop-out_consequences.pdf
- 14 Indiana Family & Social Services Administration. (2009). *Child care income eligibility determination and fee schedule*. Retrieved from, http://www.in.gov/fssa/files/Fee_Sched_2009PL_to170.pdf
- 15 Indiana Institute for Working Families. (2008). *Is Indiana getting its fair share? Federal programs available to help working hoosier families*. Retrieved from, <http://www.incap.org/documents/iifw/2008/FAIRSHAREREPORT2008.pdf>
- 16 Wikipedia. (2009). *Child abuse*. Retrieved from, http://en.wikipedia.org/wiki/Child_abuse
- 17 Child Welfare Info Gateway. (2006). *Cost-benefit analysis of prevention*. Retrieved from, http://www.childwelfare.gov/preventing/evaluating/cost_benefit.cfm